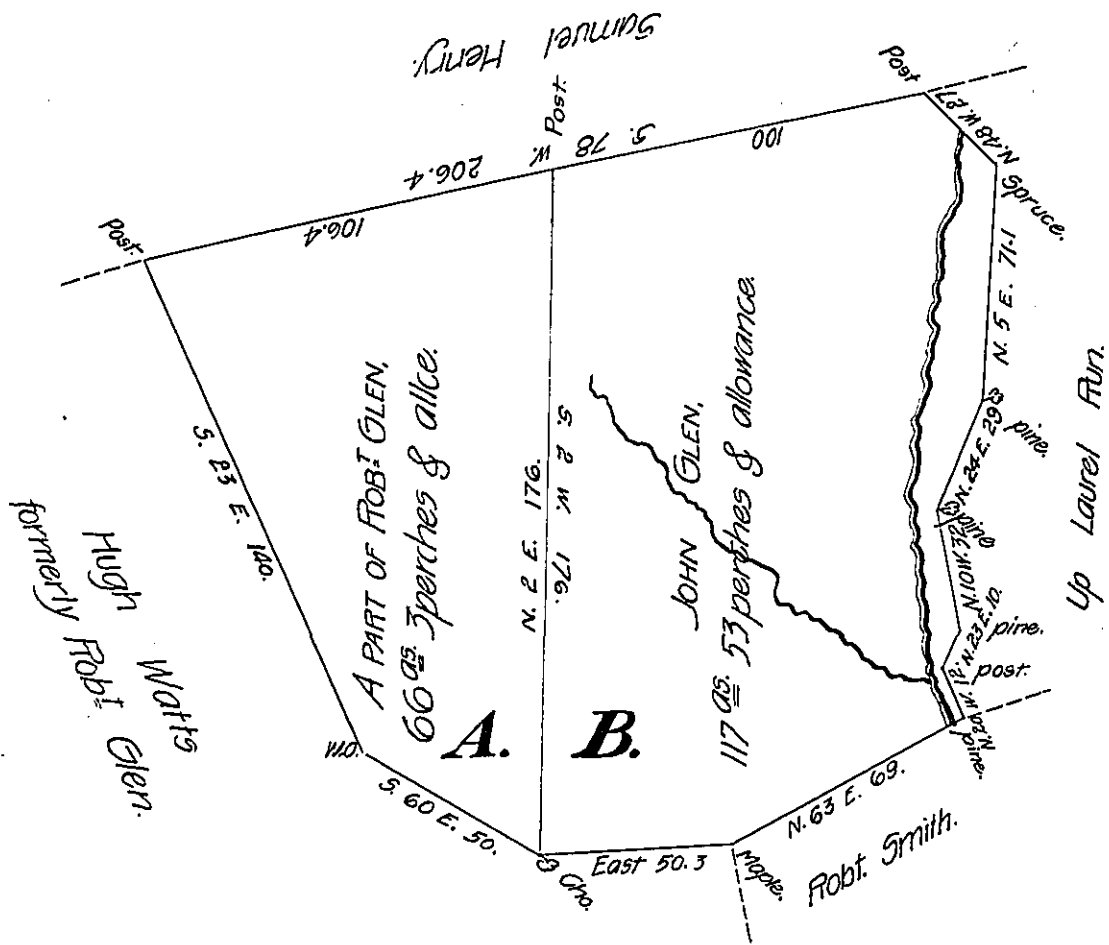


C-90-238



Situate in Barree township, Huntingdon County. The peice marked A contains sixty six acres and 3 perches and is a part of Robert Glens Survey of 161^{ac} 130 perches. That marked B is John Glens Survey formerly 114 ac. 82 perches now 117^{ac} 53 perches and allowance, first surveyed the 9th day of December, 1794, on Warrants to John and Robt. Glen, dated the 15th day of January, 1794. now resurveyed and divided as above the 9th day of June, 1810.

Jn^o. Morrison, D.S.

Andrew Porter, Esq^r,
Surveyor General.

IN TESTIMONY that the above is a copy of the original remaining on file in the Department of Internal Affairs of Pennsylvania, made comformably to an Act of Assembly approved the 16th day of February 1833, I have hereunto set my hand and caused the Seal of said Department to be affixed at Harrisburg, this Twentieth day of February 1908.

Henry Houck
Secretary of Internal Affairs.